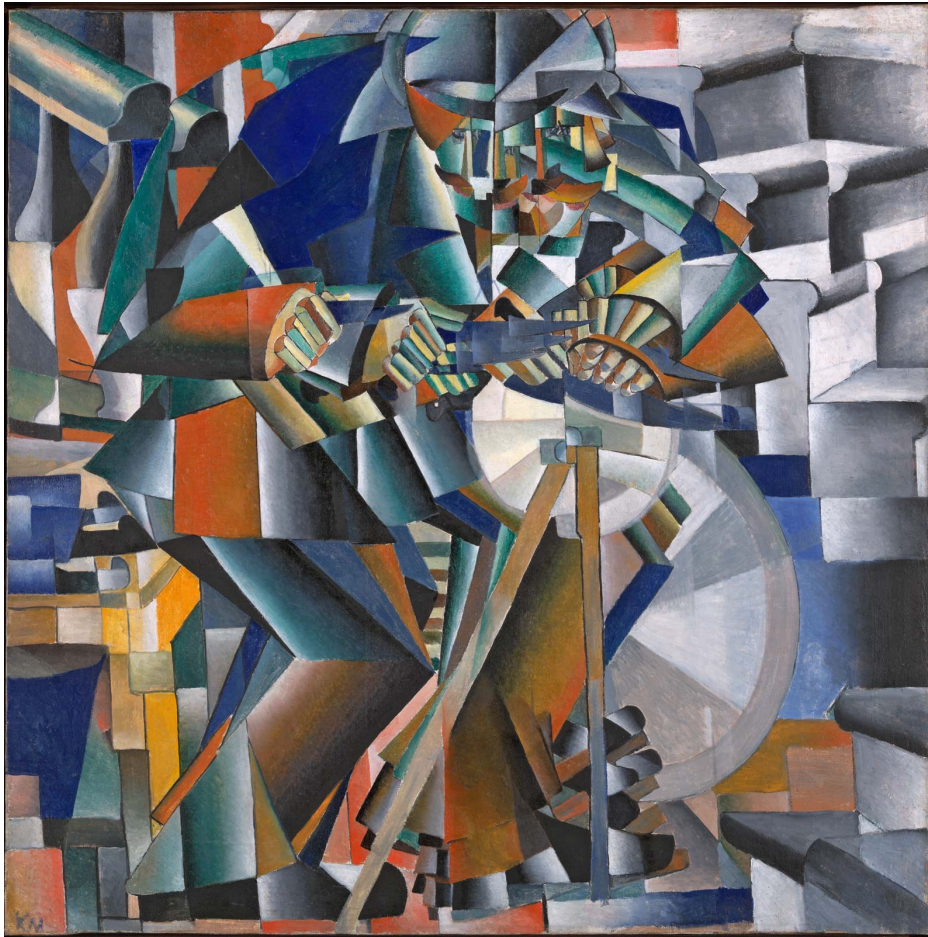


R.U.R.

Costumes by Naya Tadavarthy

10.27.20

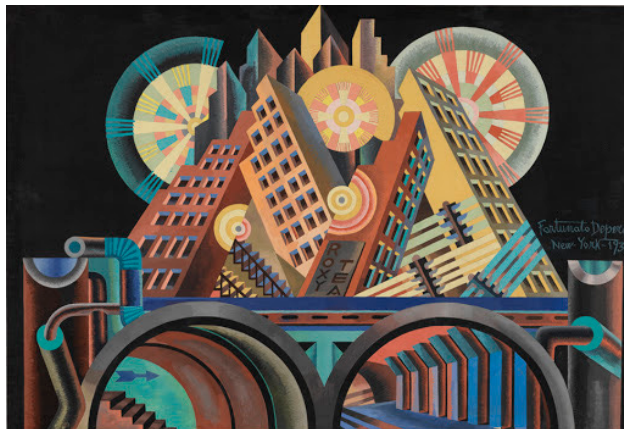
Inspiration - Futurism



Kazimir Malevich, *The Knife Grinder*, 1912



Kazimir Malevich, *Woman with Pails: Dynamic Arrangement*, 1912



Fortunato Depero, *Grattacieli e tunnel (Skyscrapers and Tunnel)*, 1930



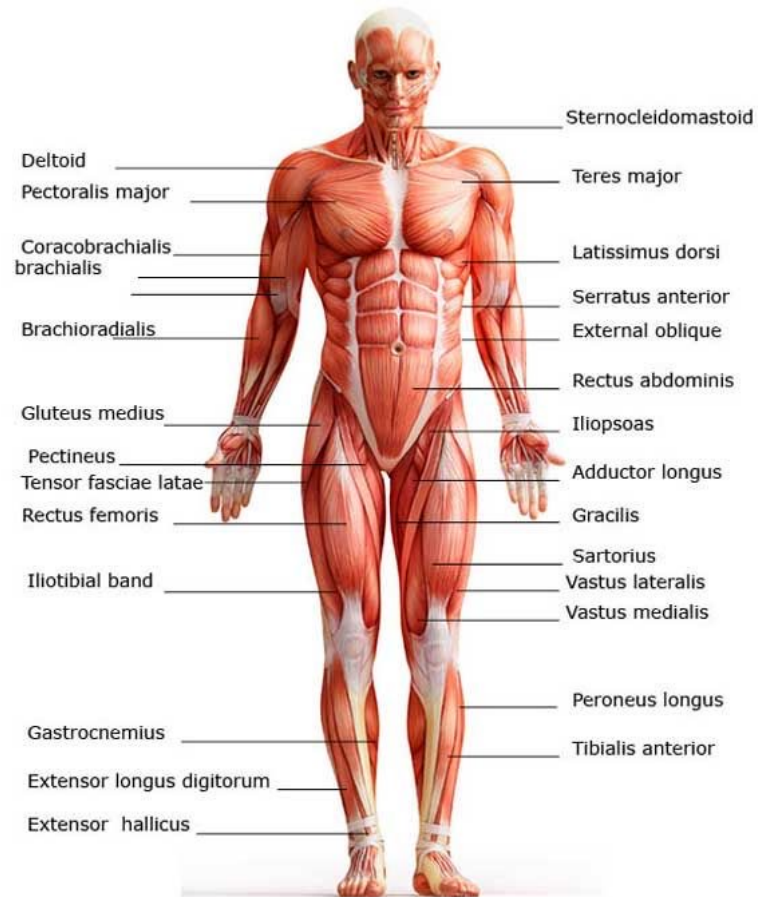
Gino Severini, *Armored Train in Action*, 1915

Inspiration – The Human Form

Major Anterior Muscles



Pablo Picasso, *Portrait of Daniel Henry Kahnweiler*, 1910



Pablo Picasso, *Portrait of Ambroise Vollard*, 1910

Inspiration - Dystopia



Martin Wittfooth, *Bloom*, 2015



Martin Wittfooth, *Harvester*, 2013



Martin Wittfooth, *Gathering*, 2015

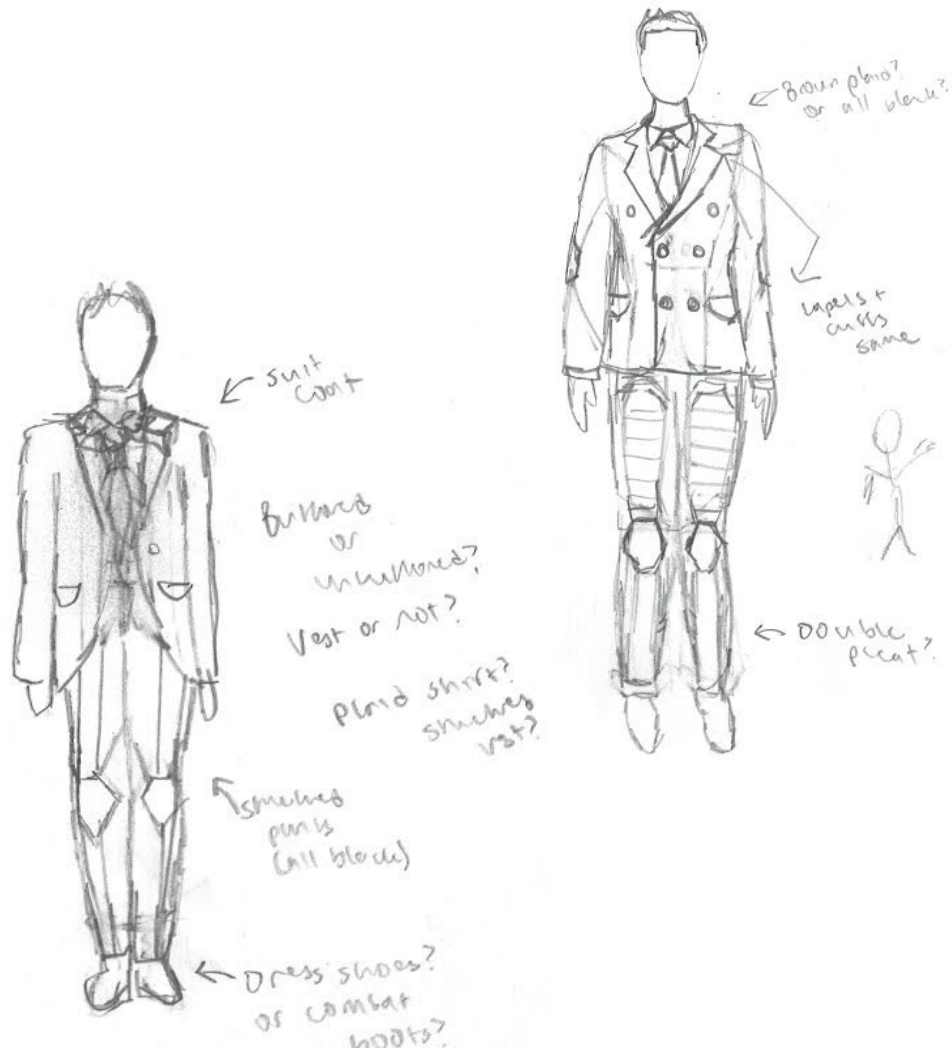
Helena & Primus



Helena Glory



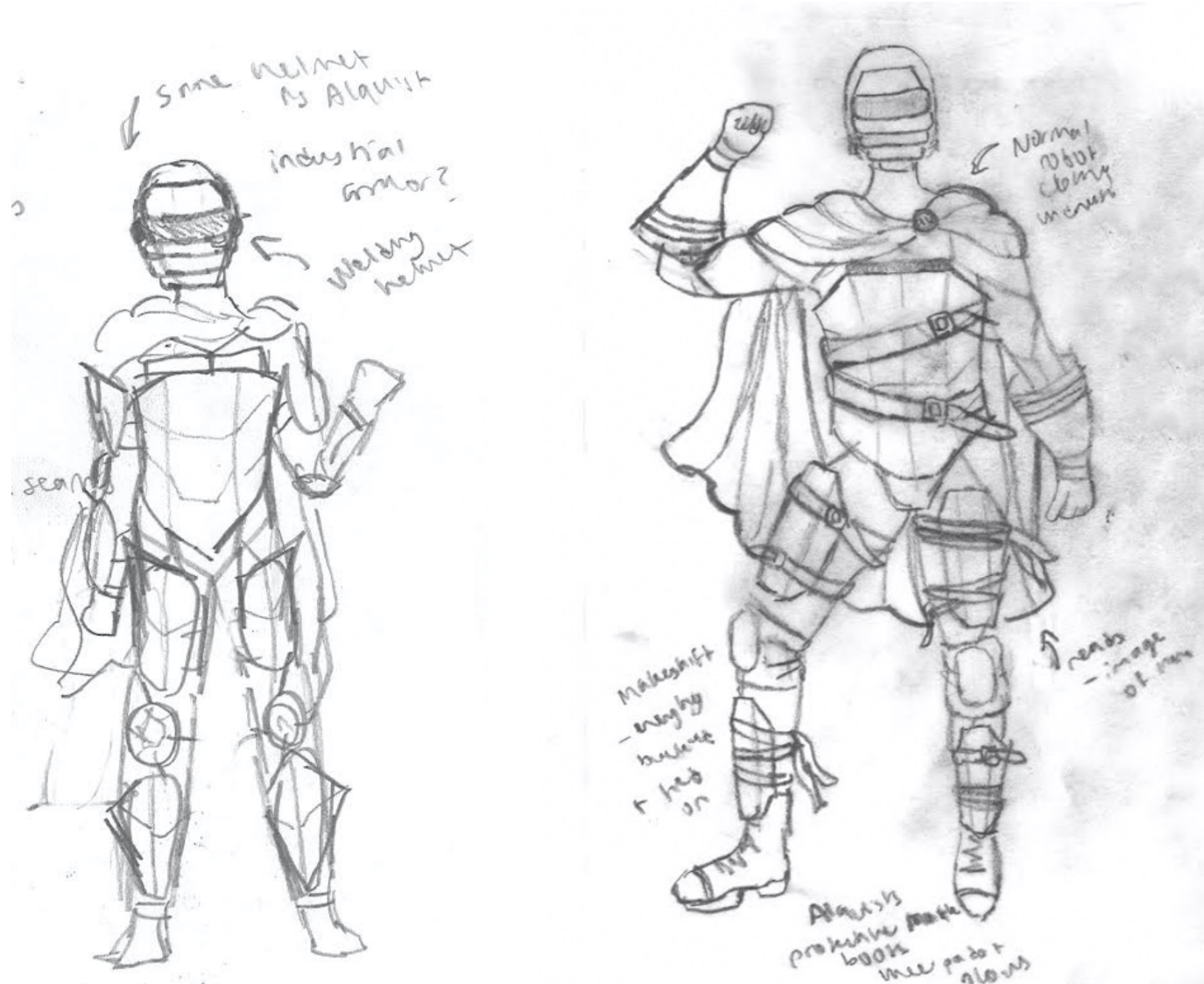
Harry Domin

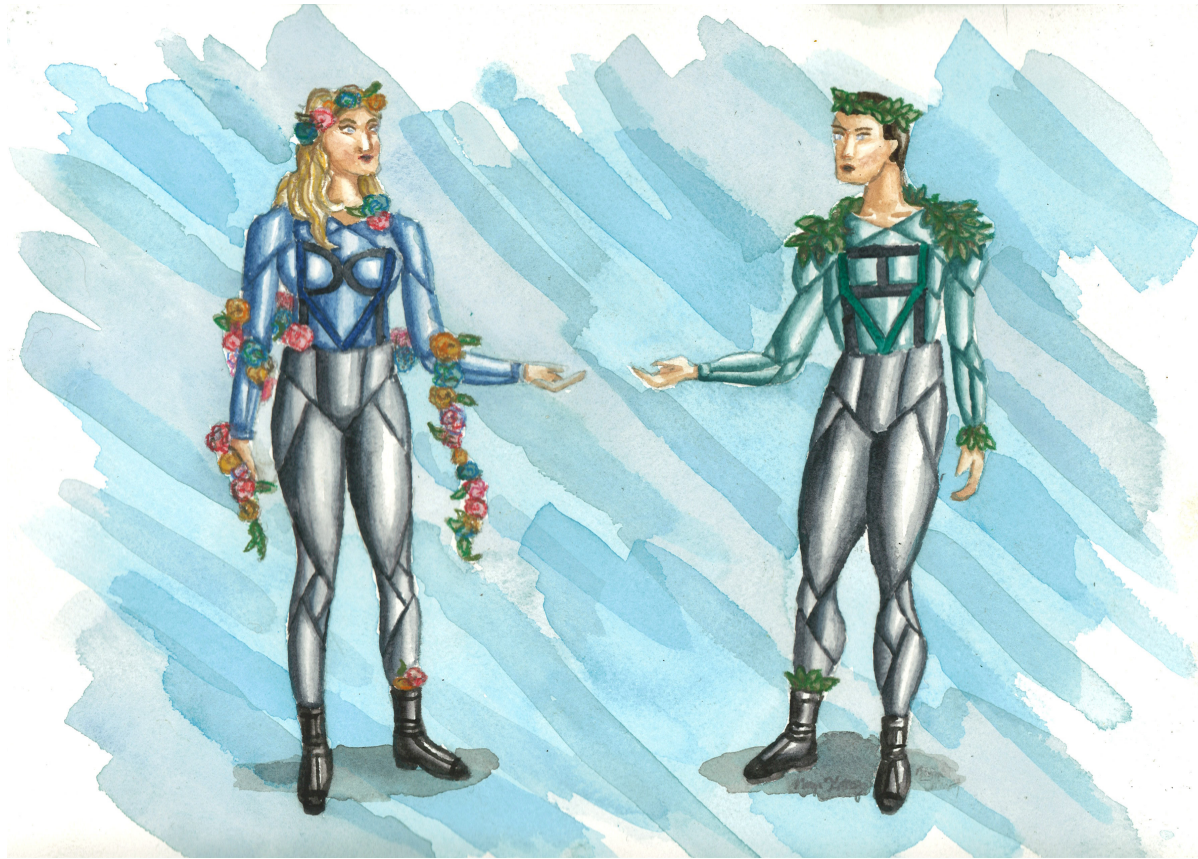


Mr. Alquist



Radius





Images

Kazimir Malevich, *The Knife Grinder* <https://cdn.britannica.com/22/181922-050-F14558F4/Knife-Grinder-Principle-Glittering-oil-canvas-Kazimir.jpg>

Kazimir Malevich, *Woman with Pails: Dynamic Arrangement* <https://img.theculturetrip.com/wp-content/uploads/2016/04/woman-with-pails-dynamic-arrangement.jpg>

Fortunato Depero, *Grattacieli e tunnel (Skyscrapers and Tunnel)* <https://lh3.googleusercontent.com/proxy/btzbg6LwrOk594S6LSvDfgotl-rNvcfrXuVyGOWCB4nIk5ihEZbdtL94E7uB0uN8ZSJYznkWEfco-AerJTAzgs2ddhYbzEf7rktqfgGAuKDfZlWW3Dr9JvzaTHVNju324Ek8u1g2nekqpRSIlg>

Gino Severini, *Armored Train in Action* https://media.newyorker.com/photos/59094df4019dfc3494e9d06f/master/pass/140303_r24689.jpg

Pablo Picasso, *Portrait of Daniel Henry Kahnweiler*, https://upload.wikimedia.org/wikipedia/en/6/68/Picasso_Portrait_of_Daniel-Henry_Kahnweiler_1910.jpg

Major Anterior Muscles, <https://i.pinimg.com/originals/eb/7b/54/eb7b542a3b3c239db71bff7cbbf4a5f1.jpg>

Pablo Picasso, *Portrait of Ambroise Vollard* <https://www.pablocicasso.org/images/paintings/portrait-of-ambroise-vollard.jpg>

Martin Wittfooth, *Bloom*, https://images.squarespace-cdn.com/content/v1/583dadce414fb50504ebf1f4/1480444502886-YSDMTCAKNKTHYD34HT8J/ke17ZwdGBtoddI8pDm48kGjezNA5e7ntvWpRL2I8JMMUqsxRUqqbr1mOJYKfIPR7LoDQ9mXPOjoJoqy81S2I8GRo6ASst2s6pLvNAu_PZdKLSpvJeQfyd_CzFOzmRb2HxWkluf0PL4M_zZr8e220B

Martin Wittfooth, *Harvester*, <https://images.squarespace-cdn.com/content/v1/583dadce414fb50504ebf1f4/1480446626327-05BFPN4FCR8EHFSLJ90/ke17ZwdGBtoddI8pDm48kArh3mU1rnlnohveWlfD9twUqsxRUqqbr1mOJYKfIPR7LoDQ9mXPOjoJoqy81S2I8PaoYXhp6HxlwZik7-Mi3Tsic-L2IOPH3Dwrhl-Ne3Z22EubTB6TtmaRxeq0lWhSY>

Martin Wittfooth, *Gathering*, https://images.squarespace-cdn.com/content/v1/583dadce414fb50504ebf1f4/1480444604601-E9QXBTGKRWWMKNGY5M2V/ke17ZwdGBtoddI8pDm48kJs5isNsLdl1JQ-2usarszAUqsxRUqqbr1mOJYKfIPR7LoDQ9mXPOjoJoqy81S2I8GRo6ASst2s6pLvNAu_PZdJOrKvRhJfWVA5KdbESnAMiyle-DPIfR2YwmMgkSik15